



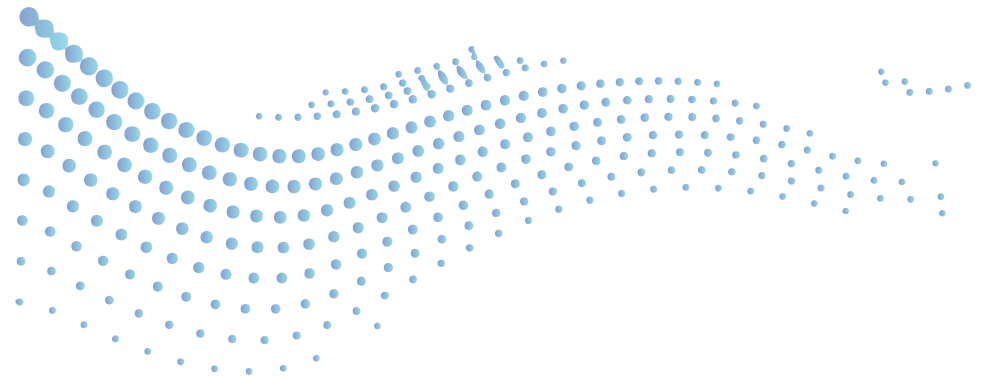
## CONTACT US

+1 312-786-5906 (Office)  
+1 773-226-0919 (Mobile/WhatsApp)

medsourceline.com

connect@medsourceline.com

750 N State St. Chicago, IL 60654










## Veterinary Monitor MYD-01

### Features:

- 3.5 inch LCD color touch screen
- Data can be recorded with unlimited storage time
- Standard veterinary blood pressure cuffs in various sizes
- Result and waveform are shown on the LCD display in real time
- The built-in rechargeable lithium battery allows this device to operate continuously for approximately 18 hours
- The portability and light weight of this device make it suitable for animal hypertension screening and BP measurement



### Specifications:

 Oxygen Saturation	Detection Scope: 35%-99% Accuracy: $\pm 1\%$ 90%-99% $\pm 2\%$ 70%-90%
 Blood Pressure	Cuff gassing time: less than 15S Systolic blood pressure: 30mmHg – 255mmHg Diastolic pressure: 15mmHg – 220mmHg Mean pressure: 20mmHg – 235mmHg Detection accuracy: static pressure $\pm 4$ mmHg
 Respiration	Scope: 25-250BPM Accuracy: $\pm 1$ bmp
 Temperature	Scope: 25°C-45°C Accuracy: $\pm 0.2^\circ\text{C}$
 Monitor	Size: 131mm*78mm*39mm Net weight: 300g Power supply: D.C3.7,2600mAH



## Veterinary Ultrasonic Scaler SYD-02

### Features:

- Sealed Handpiece
- Scaling & Perio

### Specifications:

Input: AC100~240V, 47~63Hz	Water pressure: 0.01Mpa~0.05MP	Dimensions:80*170*170mm
Main unit input: DC30V, 1.5A	Vibration frequency of the tip:	Packing Size:275*230*140mm
Input Power: 30~48VA	Ultrasonic output power: 3W~20W	Weight of Main Unit:0.65KG
Quality Guarantee: Host-3 years, Handpiece-1 year		



## Veterinary Handheld Slit Lamp LYD-03

### Features:

- Ultra-portable
- LED illumination
- Sharpest slit
- No need to replace illumination lamp

### Specifications:

Magnification	5x
Range of slit length	5mm ~ 11mm
Minimum slit width	≤ 0.5mm
Working distance	12 ~ 32mm
Power supply	AA batteries x 2
Illumination	LED bulb ( 3V/1W )
Battery life	More than 3h (AA alkaline batteries x 2)
Net weight	120g (without batteries)



## Veterinary Infusion Pump IYD-04

### Features:

- 4.3 inch color touch screen for easy operation and clear vision
- Compact and light weight design for easy carrying and mounting
- Built-in lithium battery, around 5 hours working time after fully charged
- Multiple infusion modes to satisfy different infusion requirements
- User friendly interface with audible and visual alarm system

### Specifications:

Applicable infusion set	Various brand of infusion set, single use 20drops/ml infusion set, diameter: 3.4~4.5mm
Infusion Modes	ml/h(default):Flowrate&volumemode,Flowrate&time mode, Flow rate mode d/min: Drip & Volume mode, drip & time mode, Drip mode
Infusion dripping speed	20d/ml, infusion set: 1 - 1500d/min
infusion accuracy	±5%
Power supply	ACpower supply:100--240V50/60Hz; Extetal DC power supply:7.4V
Battery	Internal rechargeable Lithium battery,1800mAh



## Veterinary Syringe Pump SYD-04

### Features:

- 4.3 inch color touch screen for clear vision
- Simple rate mode with one key start , easy to operate
- Compatible with various brands of syringe
- Various infusion modes to meet different clinical requirements
- User friendly interface with audible and visual alarm system
- Rechargeable lithium battery can work continuously for around 5 hours



### Specifications:

Applicable Syringe	Various brands of sterile syringe: 5ml,10ml, 20ml, 30ml, 50ml/60ml
Infusion mode	Rate mode, Rate -time mode, Rate-VIBI
Accuracy	±2% (After syringe correct calibration)
Alarm	Syringe not inserted, No operation, Infusion complete, Battery empty, Occlusion, Battery low, Parameter not confirmed, AC powerfail, Syringe Instal Error etc.
Power supply	AC power supply: 100---240V 50/60Hz ; External DC power supply: 7.4 V
Battery	Internal rechargeable Lithium battery, 1800mAh





## Veterinary Stethoscope SYD-05

### Features:

- Zinc composite multifunctional listening head
- Thickened double tube color guide tube
- Soft sealing plug
- 6mm stainless steel hanging

### Specifications:

Packing	Meast(cm)	Qty(pcs)	G.W(kg)
Ordinary box	67*31*43	50	15.5
Gift box	52*34*46	30	15.5



## Veterinary Otoscopy OYD-06

### Features:

- Direct illumination
- 3X magnification for the viewing window
- Good LED Bulb super bright white light to watch true tissue color
- Equipped with 4 kinds of different size specula and the diameters are 2.5/3/4/5mm for different pets

### Specifications:

Material	ABS,Copper
Length	17cm
Color	black